

Belanko™ S



S I M P L I C I T Y

M E E T S S T Y L E

CONTENTS

- 02 Stylish design
- 04 Safe and swift installation
- 06 Strong offerings
- 08 Sensible functions for hotels
- 10 Scalable setup
- 12 Catalogue pages
- 19 Selection charts

S I M P L



S T Y L E

I C I T Y



S A F E T Y



STYLISH DESIGN

Timeless classics meet a new favourite

There is always room for the basic white and ivory colours because they blend perfectly with every room design. For something different, **Belanko™ S** also offers the anthracite finish.



Glossy finish for easy cleaning



Thin matt finish edging for a distinctive look



Subtle enhancements that make a difference

Essentials always work. **Belanko™ S** ticks all the boxes for the essential range with a little extra – premium quality, clean lines, smooth surface and slim profile.



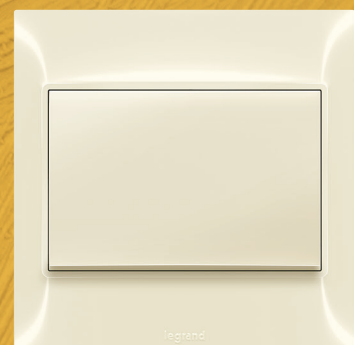
Slim profile for a modern touch



White



Anthracite



Ivory¹

SAFE AND SWIFT INSTALLATION



Flexibility

Oblong shaped holes provide flexibility for easy adjustment when the switch is not set straight

Safe installation

No access to live metal parts even if the cover plate and plate are not installed

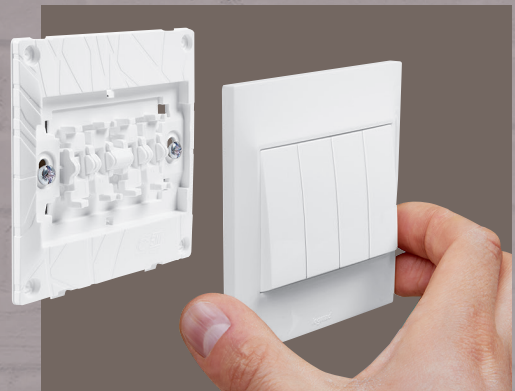


All-in-one

Switch plate and rocker are supplied as a set to enable quick installation

Safer for the installer, safer for the user

We share the same goal. To get the job done fast, safely and perfectly. **Belanko™ S** was engineered to meet just that purpose.

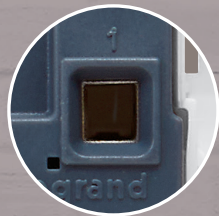
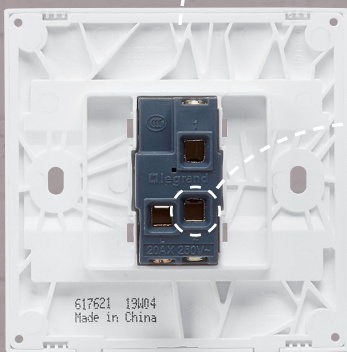


Just one click

Clip up to a 4 gang switch single-handed

ION

Robustness
Ribs make the switch sturdy



Easy wiring
Save time with ready-to-wire screw terminals



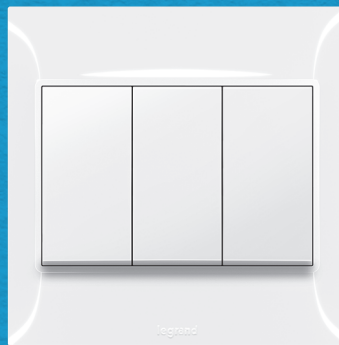
Perfect protection for a neat result

The soft protection film keeps the product safe from dust and scratches until the work has been completed. Only the soft protection film will get stained by the ongoing wall paintwork.

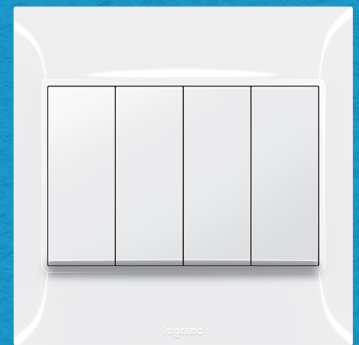


STRONG

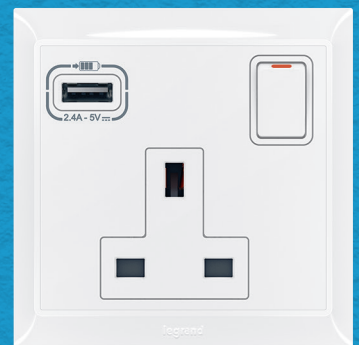
OFFERINGS



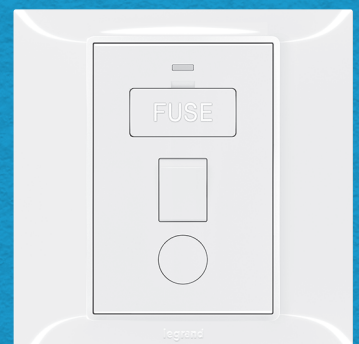
3 gang switch



4 gang switch



BS socket outlet with
USB A-Type charger



Switched fused connection unit
with neon and cord outlet

Above standard selection for standard homes

There is no place like home. Make it comfortable and optimal for modern lifestyles.



Universal dimmer suitable for all modern loads



Dimmable LEDs



Dimmable compact fluorescent lamps



Halogen with electronic or ferromagnetic transformer



Incandescent and halogen lamps



BS socket outlet with USB A-Type charger and IP55 cover



Suitable for outdoor use

The splash-proof cover allows a 1 gang Belanko™ S mechanism to be installed in outdoor environments. It also ensures protection against dust. With plug engaged, IP55 protection is maintained.

SENSIBLE

FUNCTIO

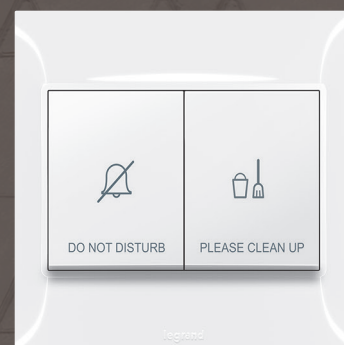
FOR HOTELS



Indicator for corridor



Key card switch



Internal control unit



A comprehensive range of hospitality applications

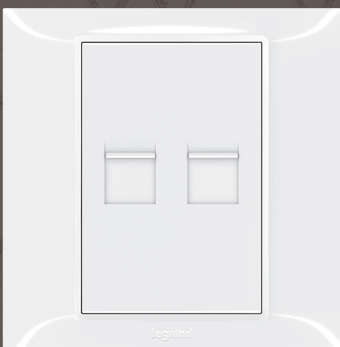
The best compliment for a hotel is when guests feel at home. Now, be a hospitable host at all times with **Belanko™ S** thanks to its hospitality functions.

Compliant with Guest Room Management Systems for hotel operators to efficiently control and manage facilities

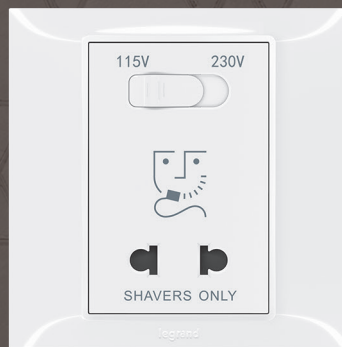
NS



BS socket outlet with USB A-Type and C-Type charger



Keystone data socket



Shaver socket



SCALABLE

SETUP

Infinite possibilities with
limitless combinations

There is no need to settle for less.
Belanko™ S works both independently
and with the Arteor range. The Arteor
adaptor offers perfect versatility
for your every need – hospitality,
residential and commercial projects.



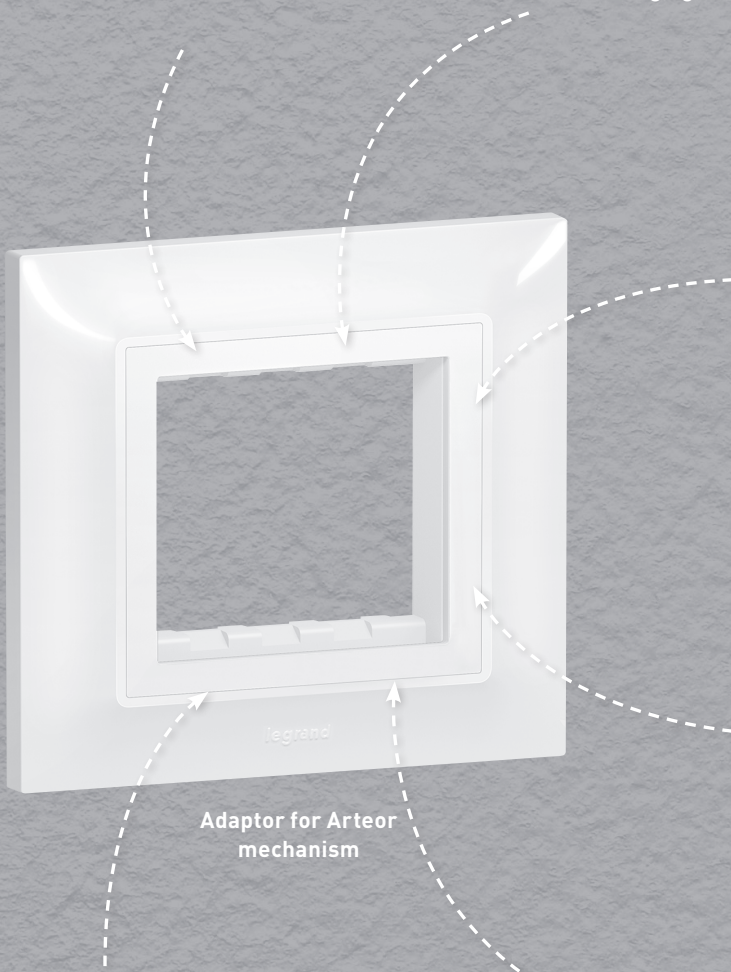
Automatic switch



Skirting light



Light whenever and wherever needed



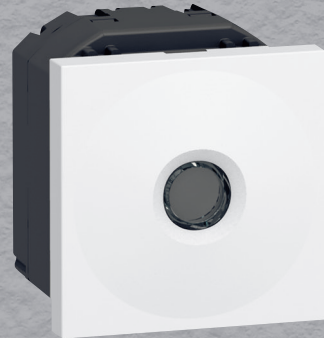
Adaptor for Arteor mechanism



Electronic room thermostat



Temperature controlled every day, every minute



Sensitive switch



No contact needed to switch on and off



Power up quickly and easily



USB C-Type charger



HDMI socket



Quality display ready and available

...and more.

Belanko™ S

single pole switches and push-buttons



6 176 01



6 176 05



6 176 07



6 176 11



6 176 16

Conform to BS EN 60669-1
 Material: Thermoplastic with glossy finish
 Dimensions: 86 x 86 x 9.5 mm (1 gang)
 Supplied with 2 screws M3.5 for BS boxes

Pack	Cat.Nos	Single pole switches 16 AX - 250 V
10	6 176 00	1 gang - 1-way switch ○ White ● Anthracite ● Ivory
10	6 177 00	
10	6 178 00 ¹	
10	6 176 01	1 gang - 2-way switch ○ White ● Anthracite ● Ivory
10	6 177 01	
10	6 178 01 ¹	
10	6 176 02	2 gang - 1-way switch ○ White ● Anthracite ● Ivory
10	6 177 02	
10	6 178 02 ¹	
10	6 176 03	2 gang - 2-way switch ○ White ● Anthracite ● Ivory
10	6 177 03	
10	6 178 03 ¹	
10	6 176 09	Intermediate switch ○ White ● Anthracite ● Ivory
10	6 177 09	
10	6 178 09 ¹	
10	6 176 04	3 gang - 1-way switch ○ White ● Anthracite ● Ivory
10	6 177 04	
10	6 178 04 ¹	
10	6 176 05	3 gang - 2-way switch ○ White ● Anthracite ● Ivory
10	6 177 05	
10	6 178 05 ¹	
10	6 176 06	4 gang - 1-way switch ○ White ● Anthracite ● Ivory
10	6 177 06	
10	6 178 06 ¹	
10	6 176 07	4 gang - 2-way switch ○ White ● Anthracite ● Ivory
10	6 177 07	
10	6 178 07 ¹	

Pack	Cat.Nos	Single pole switches 20 AX - 250 V
10	6 176 20	1 gang - 1-way switch ○ White ● Anthracite ● Ivory
10	6 177 20	
10	6 178 20 ¹	
10	6 176 21	1 gang - 2-way switch ○ White ● Anthracite ● Ivory
10	6 177 21	
10	6 178 21 ¹	
10	6 176 22	2 gang - 1-way switch ○ White ● Anthracite ● Ivory
10	6 177 22	
10	6 178 22 ¹	
10	6 176 23	2 gang - 2-way switch ○ White ● Anthracite ● Ivory
10	6 177 23	
10	6 178 23 ¹	
10	6 176 24	3 gang - 1-way switch ○ White ● Anthracite ● Ivory
10	6 177 24	
10	6 178 24 ¹	
10	6 176 25	3 gang - 2-way switch ○ White ● Anthracite ● Ivory
10	6 177 25	
10	6 178 25 ¹	
10	6 176 10	1 gang ○ White ● Anthracite ● Ivory
10	6 177 10	
10	6 178 10 ¹	
10	6 176 15	2 gang ○ White ● Anthracite ● Ivory
10	6 177 15	
10	6 178 15 ¹	
10	6 176 11	Bell push ○ White ● Anthracite ● Ivory
10	6 177 11	
10	6 178 11 ¹	
10	6 176 16	2 gang for shutters ○ White ● Anthracite ● Ivory
10	6 177 16	
10	6 178 16 ¹	

1: Available on request

Belanko™ S

double pole switches and cooker control unit



Belanko™ S

dimmers and ventilation control



6 176 72



6 176 76



6 176 35



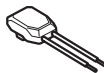
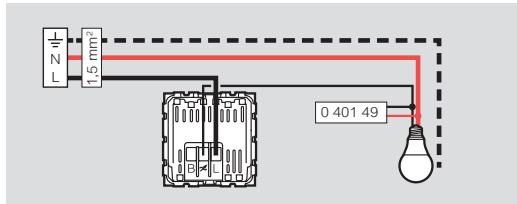
6 176 33

Material: Thermoplastic with glossy finish
 Dimensions: 86 x 86 x 9.5 mm (1 gang) / 86 x 146 x 9.5 mm (2 gang)
 Supplied with 2 screws M3.5 for BS boxes

Material: Thermoplastic with glossy finish
 Dimensions: 86 x 86 x 9.5 mm (1 gang)
 Supplied with 2 screws M3.5 for BS boxes

Pack	Cat.Nos	Double pole switches 20 A - 250 VA
10	6 176 73	1 gang - 1-way switch <input type="radio"/> White <input type="radio"/> Anthracite <input type="radio"/> Ivory
10	6 177 73	
10	6 178 73 ¹	
10	6 176 71	1 gang - 1-way switch + red neon indicator + earth connection <input type="radio"/> White <input type="radio"/> Anthracite <input type="radio"/> Ivory
10	6 177 71	
10	6 178 71 ¹	
10	6 176 72	1 gang - 1-way switch + red neon indicator + earth connection with "Water Heater" marking <input type="radio"/> White <input type="radio"/> Anthracite <input type="radio"/> Ivory
10	6 177 72	
10	6 178 72 ¹	
10	6 176 29	Double pole switches 32 A - 250V 1 gang - 1-way switch + red neon indicator <input type="radio"/> White <input type="radio"/> Anthracite <input type="radio"/> Ivory
10	6 177 29	
10	6 178 29 ¹	
5	6 176 75	Double pole switches 45 A - 250 VA 1 gang - 1-way switch <input type="radio"/> White <input type="radio"/> Anthracite <input type="radio"/> Ivory
5	6 177 75	
5	6 178 75 ¹	
5	6 176 76	1 gang - 1-way switch + red neon indicator <input type="radio"/> White <input type="radio"/> Anthracite <input type="radio"/> Ivory
5	6 177 76	
5	6 178 76 ¹	
5	6 176 77	2 gang - 1-way vertical switch + red neon indicator <input type="radio"/> White <input type="radio"/> Anthracite <input type="radio"/> Ivory
5	6 177 77	
5	6 178 77 ¹	
5	6 176 78	Cooker control unit - 250 V 45 A double pole switch + red neon and 13 A BS switched socket outlet + red neon <input type="radio"/> White <input type="radio"/> Anthracite <input type="radio"/> Ivory
5	6 177 78	
5	6 178 78 ¹	

1: Available on request

Pack	Cat.Nos	Dimmers
1	6 176 31	500 W RL dimmer Push on/off and rotary dimmer - 50/60 Hz 1 gang - 2-way : - 60-500 W (127 V) for incandescent and halogen lamps - 60-600 VA (230 V) / 60-300 VA (127 V) for halogen lamps with electronic transformer with leading edge behaviour - 60-500 VA (127 V) for halogen lamps with ferromagnetic transformers Slider at the back to select 230 V or 127 V <input type="radio"/> White <input type="radio"/> Anthracite <input type="radio"/> Ivory
1	6 177 31	
1	6 178 31 ¹	
1	6 176 35	300 W RLC+LED dimmer For all types of lamps: - dimmable LEDs: 5 W to 75 W (10 lamps max. 5 W to 37 W (127 V)) - dimmable compact fluorescent lamps: 5 W to 75 W (10 lamps max. 5 W to 37 W (127 V)) - halogen with ferromagnetic or electronic transformer: 5 VA to 300 VA / 5 VA to 150 VA (127 V) - fluorescent tube - ballast: 5 VA to 300 VA / 5 VA to 150 VA (127 V) - halogen and incandescent 240 VA: 5 W to 300 W / 5 W to 150 W (127 V) When switched on, gradually (2 seconds) lights up at the level set before last switch-off <input type="radio"/> White <input type="radio"/> Anthracite <input type="radio"/> Ivory
1	6 177 35	
1	6 178 35 ¹	
1	0 401 49	Active Power Compensator  Makes 2-wire electronic lighting control units without neutral compatible with all commercially-available loads (LED, compact fluorescent, ELV halogen with ferromagnetic or electronic ballast, 230 V halogen, fluorescent tube, incandescent) Consumption 0.4 W
		
1	6 176 33	Ventilation control Conform to BS EN 60669-1 Fan control 250 VA - 50 Hz <input type="radio"/> White <input type="radio"/> Anthracite <input type="radio"/> Ivory
1	6 177 33	
1	6 178 33 ¹	

1: Available on request



6 176 27



6 176 38



6 176 95



6 176 91



6 176 34

Material: Thermoplastic with glossy finish
 Dimensions: 86 x 86 x 9.5 mm
 Supplied with 2 screws M3.5 for BS boxes

Pack	Cat.Nos	Television sockets
10	6 176 27	Single TV socket, female ○ White ● Anthracite ○ Ivory
10	6 177 27	
10	6 178 27 ¹	
10	6 176 26	Single TV socket, "F" type ○ White ● Anthracite ○ Ivory
10	6 177 26	
10	6 178 26 ¹	
10	6 176 38	Double TV socket, female + "F" type ○ White ● Anthracite ○ Ivory
10	6 177 38	
10	6 178 38 ¹	
10	6 176 32	TV-R-SAT ○ White ● Anthracite ○ Ivory
10	6 177 32	
10	6 178 32 ¹	

Pack	Cat.Nos	Telephone sockets
10	6 176 99	Telephone connection block 10 connections ○ White ● Anthracite ○ Ivory
10	6 177 99	
10	6 178 99 ¹	
10	6 176 95	BS master ○ White ● Anthracite ○ Ivory
10	6 177 95	
10	6 178 95 ¹	
10	6 176 96	BS secondary ○ White ● Anthracite ○ Ivory
10	6 177 96	
10	6 178 96 ¹	
10	6 176 97	RJ 11 socket ○ White ● Anthracite ○ Ivory
10	6 177 97	
10	6 178 97 ¹	
10	6 176 98	Double RJ 11 socket ○ White ● Anthracite ○ Ivory
10	6 177 98	
10	6 178 98 ¹	

Pack	Cat.Nos	Data sockets
10	6 176 91	RJ 45 Cat.6 UTP ○ White ● Anthracite ○ Ivory
10	6 177 91	
10	6 178 91 ¹	
10	6 176 92	Double RJ 45 Cat.6 UTP ○ White ● Anthracite ○ Ivory
10	6 177 92	
10	6 178 92 ¹	
10	6 176 17	1 gang - single Keystone adaptor ○ White ● Anthracite ○ Ivory
10	6 177 17	
10	6 178 17 ¹	
10	6 176 34	1 gang - double Keystone adaptor ○ White ● Anthracite ○ Ivory
10	6 177 34	
10	6 178 34 ¹	

1: Available on request

Belanko™ S

hotel equipment



Material: Thermoplastic with glossy finish
 Dimensions: 86 x 86 x 9.5 mm (1 gang)
 Supplied with 2 screws M3.5 for BS boxes

Pack	Cat.Nos	Key card switch
1	6 176 12	16 A - 230 V~ - 50/60 Hz Time delay of approx. 30 s after card removal Use card with width max. 54 mm
1	6 177 12	○ White
1	6 178 12 ¹	● Anthracite ● Ivory

Pack	Cat.Nos	Hotel bedrooms call indicators
10	6 176 13	2 settings : - Do not disturb - Please clean the room
10	6 177 13	Indicator for corridor Installed in the corridor, displays calls
10	6 178 13 ¹	○ White ● Anthracite ● Ivory

Pack	Cat.Nos	Internal control unit
10	6 176 14	Installed in the room, allows the user to select the desired setting
10	6 177 14	○ White
10	6 178 14 ¹	● Anthracite ● Ivory

Pack	Cat.Nos	Shaver sockets
1	6 176 08	Conform to BS 61558. 115/230 V - 20 VA - 50/60 Hz Surface or flush-mounting, back box to be min. 47 mm deep. Spacer delivered to fit in standard box, deep 35 mm
1	6 177 08	1 gang
1	6 178 08 ¹	○ White ● Anthracite ● Ivory

Pack	Cat.Nos	Shaver sockets
1	6 176 18	Conform to BS 61558. 115/230 V - 20 VA - 50/60 Hz Surface or flush-mounting, back box to be min. 47 mm deep.
1	6 177 18	2 gang
1	6 178 18 ¹	○ White ● Anthracite ● Ivory

Pack	Cat.Nos	Security switch
1	6 176 19	1 A resistive - 250 V~
1	6 177 19	Panic button
1	6 178 19 ¹	○ White ● Anthracite ● Ivory

1: Available on request

Belanko™ S

hotel equipment

Guest Room Management System

The Room Controller Unit, Cat.No 048408 or 048412, associated with mechanical Belanko™ S functions can manage the lights, sockets outlet, ventilation and curtains independently in each room. It can be integrated with the Building Management System (BMS) and the Property Management System (PMS) in order to enable a global management of the building and the hotel's operations.

For complementary information on the Room controller, please contact us



6 176 41



6 176 49



6 176 58



6 176 44

Material: Thermoplastic with glossy finish
 Dimensions: 86 x 86 x 9.5 mm (1 gang) / 86 x 146 x 9.5 mm (2 gang). Supplied with 2 screws M3.5 for BS boxes

Pack	Cat.Nos	British Standard socket outlets 13 A - 250 V~
10	6 176 41	Conform to BS 1363-2 1 gang single pole switched ○ White ● Anthracite ● Ivory
10	6 177 41	
10	6 178 41 ¹	
5	6 176 46	2 gang single pole switched ○ White ● Anthracite ● Ivory
5	6 177 46	
5	6 178 46 ¹	
10	6 176 40	1 gang unswitched ○ White ● Anthracite ● Ivory
10	6 177 40	
10	6 178 40 ¹	
5	6 176 45	2 gang unswitched ○ White ● Anthracite ● Ivory
5	6 177 45	
5	6 178 45 ¹	
10	6 176 43	1 gang double pole switched ○ White ● Anthracite ● Ivory
10	6 177 43	
10	6 178 43 ¹	
5	6 176 48	2 gang double pole switched ○ White ● Anthracite ● Ivory
5	6 177 48	
5	6 178 48 ¹	
10	6 176 42	1 gang single pole switched + neon ○ White ● Anthracite ● Ivory
10	6 177 42	
10	6 178 42 ¹	
5	6 176 47	2 gang single pole switched + neon ○ White ● Anthracite ● Ivory
5	6 177 47	
5	6 178 47 ¹	
5	6 176 49	2 gang single pole switched with red cover + neon ○ White ● Anthracite ● Ivory
5	6 177 49	
5	6 178 49	

Pack	Cat.Nos	British Standard socket outlets 13 A - 250 V~ with USB charger
1	6 176 58	Conform to BS 1363-2:2016 Conform to IEC 60950-1 1 gang single pole switched USB A-Type 2.4 A - 5 V _{DC} - 12 W Consumption in passive mode < 0.08 W ○ White ● Anthracite ● Ivory
1	6 177 58	
1	6 178 58 ¹	
1	6 176 57	1 gang unswitched USB A-Type 2.4 A - 5 V _{DC} - 12 W Consumption in passive mode < 0.08 W ○ White ● Anthracite ● Ivory
1	6 177 57	
1	6 178 57 ¹	
1	6 176 44	2 gang single pole switched USB A-Type + C-Type 3 A - 5 V _{DC} - 15 W Consumption in passive mode < 0.08 W ○ White ● Anthracite ● Ivory
1	6 177 44	
1	6 178 44 ¹	
10	6 176 50	British Standard socket outlets 15 A - 250 V~ Conform to BS 546 1 gang unswitched ○ White ● Anthracite ● Ivory
10	6 177 50	
10	6 178 50 ¹	
10	6 176 51	1 gang single pole switched ○ White ● Anthracite ● Ivory
10	6 177 51	
10	6 178 51 ¹	
10	6 176 52	1 gang single pole switched + neon ○ White ● Anthracite ● Ivory
10	6 177 52	
10	6 178 52 ¹	
10	6 176 53	2 gang single pole switched ○ White ● Anthracite ● Ivory
10	6 177 53	
10	6 178 53 ¹	

Pack	Cat.Nos	British Standard socket outlets 5 A - 250 V~
10	6 176 54	Conform to BS 546 1 gang single pole switched ○ White ● Anthracite ● Ivory
10	6 177 54	
10	6 178 54 ¹	

1: Available on request

Belanko™ S

socket outlets (continued)



Belanko™ S

fused connection units and cable outlets



6 176 64



6 176 55

Material: Thermoplastic with glossy finish
 Dimensions: 86 x 86 x 9.5 mm (1 gang) / 86 x 146 x 9.5 mm (2 gang)
 Supplied with 2 screws M3.5 for BS boxes

Pack	Cat.Nos	Euro/US socket outlets - 10 A - 250 V \sim / 15 A - 127 V \sim
10	6 176 62	1 gang - 2 x 2P <ul style="list-style-type: none"> ○ White ● Anthracite ○ Ivory
10	6 177 62	
10	6 178 62 ¹	
10	6 176 90	1 gang - 2 x 2P switched <ul style="list-style-type: none"> ○ White ● Anthracite ○ Ivory
10	6 177 90	
10	6 178 90 ¹	
10	6 176 64	1 gang - 2 x 2P+E <ul style="list-style-type: none"> ○ White ● Anthracite ○ Ivory
10	6 177 64	
10	6 178 64 ¹	
10	6 176 56	German Standard socket outlet 16 A - 250 V\sim 1 gang - 2P+E with shutters for child protection <ul style="list-style-type: none"> ○ White ● Anthracite ○ Ivory
10	6 177 56	
10	6 178 56 ¹	
10	6 176 67	Multistandard switched socket outlet 1 gang <ul style="list-style-type: none"> ○ White ● Anthracite ○ Ivory
10	6 177 67	
10	6 178 67 ¹	
4	6 176 69	2 gang <ul style="list-style-type: none"> ○ White ● Anthracite ○ Ivory
4	6 177 69	
4	6 178 69 ¹	
1	6 176 59	Multistandard switched socket outlets 16 A 250 V\sim / 15 A - 127 V\sim with USB charger Shuttered for child safety USB charger conform to IEC 60950-1 1 gang - 2P+E USB A-Type 2.4 A - 5 V \sim - 12 W Consumption in passive mode < 0.08 W <ul style="list-style-type: none"> ○ White ● Anthracite ○ Ivory
1	6 177 59	
1	6 178 59 ¹	
1	6 176 55	2 gang - 2 x 2P+E USB A-Type + C-Type 3 A - 5 V \sim - 15 W Consumption in passive mode < 0.08 W <ul style="list-style-type: none"> ○ White ● Anthracite ○ Ivory
1	6 177 55	
1	6 178 55 ¹	

1: Available on request



6 176 82



6 176 85

Material: Thermoplastic with glossy finish
 Dimensions: 86 x 86 x 9.5 mm (1 gang) / 86 x 146 x 9.5 mm (2 gang)
 Supplied with 2 screws M3.5 for BS boxes

Pack	Cat.Nos	Fused connection units 13 A
10	6 176 80	Conform to BS 1363-4 Unswitched + cord outlet <ul style="list-style-type: none"> ○ White ● Anthracite ○ Ivory
10	6 177 80	
10	6 178 80 ¹	
10	6 176 81	Switched + cord outlet <ul style="list-style-type: none"> ○ White ● Anthracite ○ Ivory
10	6 177 81	
10	6 178 81 ¹	
10	6 176 60	Unswitched + neon + cord outlet <ul style="list-style-type: none"> ○ White ● Anthracite ○ Ivory
10	6 177 60	
10	6 178 60 ¹	
10	6 176 82	Switched + neon + cord outlet <ul style="list-style-type: none"> ○ White ● Anthracite ○ Ivory
10	6 177 82	
10	6 178 82 ¹	
10	6 176 85	Cable outlets Conform to BS 5733 20 A - 250 V\sim <ul style="list-style-type: none"> ○ White ● Anthracite ○ Ivory
10	6 177 85	
10	6 178 85 ¹	
10	6 176 86	45 A - 250 V\sim <ul style="list-style-type: none"> ○ White ● Anthracite ○ Ivory
10	6 177 86	
10	6 178 86 ¹	

1: Available on request



Pack	Cat.Nos	Blanking plates
10	6 176 28	1 gang Conform to BS 5733 ○ White ● Anthracite ● Ivory
10	6 177 28	
10	6 178 28 ¹	
5	6 176 39	2 gang ○ White ● Anthracite ● Ivory
5	6 177 39	
5	6 178 39 ¹	

20	6 176 37	Arteur adaptor Allows the integration of 2 modules Arteur mechanisms such as R.C.B.O., automatic switch, skirting lights, USB charger, etc
20	6 177 37	
20	6 178 37	
		1 gang ○ White ● Anthracite ● Ivory
1: Available on request		

Pack	Cat.Nos	Fixing accessories
2	6 176 36	Splash-proof cover Mainly for socket protection IP 55 with or without plug engaged Space inside : 86 x 86 mm ● Mist grey

8	6 133 50	Surface-mounting boxes Conform to BS 5733 Depth 35 mm 1 gang ○ White
4	6 133 51	2 gang ○ White

 For integration of Arteur functions, see Arteur offer



Belanko™ S white and colours



selection chart

		Pack	 White	 Anthracite	 Ivory
SINGLE POLE SWITCHES 16 AX - 250 V~					
1 gang - 1-way switch 1 gang - 2-way switch		10	6 176 00	6 177 00	6 178 00 ¹
		10	6 176 01	6 177 01	6 178 01 ¹
2 gang - 1-way switch 2 gang - 2-way switch		10	6 176 02	6 177 02	6 178 02 ¹
		10	6 176 03	6 177 03	6 178 03 ¹
Intermediate switch		10	6 176 09	6 177 09	6 178 09 ¹
3 gang - 1-way switch 3 gang - 2-way switch		10	6 176 04	6 177 04	6 178 04 ¹
		10	6 176 05	6 177 05	6 178 05 ¹
4 gang - 1-way switch 4 gang - 2-way switch		10	6 176 06	6 177 06	6 178 06 ¹
		10	6 176 07	6 177 07	6 178 07 ¹
SINGLE POLE SWITCHES 20 AX - 250 V~					
1 gang - 1-way switch 1 gang - 2-way switch		10	6 176 20	6 177 20	6 178 20 ¹
		10	6 176 21	6 177 21	6 178 21 ¹
2 gang - 1-way switch 2 gang - 2-way switch		10	6 176 22	6 177 22	6 178 22 ¹
		10	6 176 23	6 177 23	6 178 23 ¹
3 gang - 1-way switch 3 gang - 2-way switch		10	6 176 24	6 177 24	6 178 24 ¹
		10	6 176 25	6 177 25	6 178 25 ¹
PUSH-BUTTONS 6 A - 250 V~					
1 gang		10	6 176 10	6 177 10	6 178 10 ¹
2 gang		10	6 176 15	6 177 15	6 178 15 ¹
Bell push		10	6 176 11	6 177 11	6 178 11 ¹
2 gang for shutters		10	6 176 16	6 177 16	6 178 16 ¹
DOUBLE POLE SWITCHES 20 A - 250 V~					
1 gang - 1-way switch		10	6 176 73	6 177 73	6 178 73 ¹
1 gang - 1-way switch + red neon indicator + earth connection		10	6 176 71	6 177 71	6 178 71 ¹
1 gang - 1-way switch + red neon indicator + earth connection with "Water Heater" marking		10	6 176 72	6 177 72	6 178 72 ¹

1: Available on request

Belanko™ S white and colours

selection chart (continued)

		Pack	 White	 Anthracite	 Ivory
DOUBLE POLE SWITCHES 32 A - 250 V~					
1 gang - 1-way switch + red neon indicator		10	6 176 29	6 177 29	6 178 29 ¹
DOUBLE POLE SWITCHES 45 A - 250 V~					
1 gang - 1-way switch		10	6 176 75	6 177 75	6 178 75 ¹
1 gang - 1-way switch + red neon indicator		10	6 176 76	6 177 76	6 178 76 ¹
2 gang - 1-way vertical switch + red neon indicator		10	6 176 77	6 177 77	6 178 77 ¹
COOKER CONTROL UNIT - 250 V					
45 A DP switch + red neon and 13 A BS switched socket outlet + red neon		5	6 176 78	6 177 78	6 178 78 ¹
DIMMERS					
500 W RL dimmer		1	6 176 31	6 177 31	6 178 31 ¹
300 W RLC+LED dimmer		1	6 176 35	6 177 35	6 178 35 ¹
VENTILATION CONTROL					
Fan control 250 V~ - 50 Hz		1	6 176 33	6 177 33	6 178 33 ¹
TELEVISION SOCKETS					
Single TV socket, female		10	6 176 27	6 177 27	6 178 27 ¹
Single TV socket, "F" type		10	6 176 26	6 177 26	6 178 26 ¹
Double TV socket, female + "F" type		10	6 176 38	6 177 38	6 178 38 ¹
TV-R-SAT		10	6 176 32	6 177 32	6 178 32 ¹
TELEPHONE SOCKETS					
Telephone connection block 10 connections		10	6 176 99	6 177 99	6 178 99 ¹
BS master BS secondary		10	6 176 95	6 177 95	6 178 95 ¹
		10	6 176 96	6 177 96	6 178 96 ¹
RJ 11 socket		10	6 176 97	6 177 97	6 178 97 ¹

1: Available on request

Belanko™ S white and colours

selection chart (continued)

		Pack	 White	 Anthracite	 Ivory
TELEPHONE SOCKETS (CONTINUED)					
Double RJ 11 socket		10	6 176 98	6 177 98	6 178 98 ¹
DATA SOCKETS					
RJ 45 Cat.6 UTP		10	6 176 91	6 177 91	6 178 91 ¹
Double RJ 45 Cat.6 UTP		10	6 176 92	6 177 92	6 178 92 ¹
Single Keystone adaptor - 1 gang		10	6 176 17	6 177 17	6 178 17 ¹
Double Keystone adaptor - 2 gang		10	6 176 34	6 177 34	6 178 34 ¹
HOTEL EQUIPMENT					
Key card switch 16 A - 230 V - 50/60 Hz		1	6 176 12	6 177 12	6 178 12 ¹
Hotel bedroom call indicator - Indicator for corridor		10	6 176 13	6 177 13	6 178 13 ¹
Hotel bedroom call indicator - Internal control unit		10	6 176 14	6 177 14	6 178 14 ¹
Shaver socket 115/230 V - 20 VA - 50/60 Hz 1 gang		1	6 176 08	6 177 08	6 178 08 ¹
Shaver socket 115/230 V - 20 VA - 50/60 Hz 2 gang		1	6 176 18	6 177 18	6 178 18 ¹
SECURITY SWITCH					
Panic button 1 A resistive - 250 V~		1	6 176 19	6 177 19	6 178 19 ¹
BRITISH STANDARD SOCKET OUTLETS 13 A - 250 V~					
1 gang single pole switched		10	6 176 41	6 177 41	6 178 41 ¹
2 gang single pole switched		5	6 176 46	6 177 46	6 178 46 ¹
1 gang single pole switched + USB charger A-Type 2.4 A		1	6 176 58	6 177 58	6 178 58 ¹
1 gang unswitched		10	6 176 40	6 177 40	6 178 40 ¹
2 gang unswitched		5	6 176 45	6 177 45	6 178 45 ¹

1: Available on request

Belanko™ S white and colours

selection chart (continued)

		Pack	 White	 Anthracite	 Ivory
BRITISH STANDARD SOCKET OUTLETS 13 A - 250 V~ (CONTINUED)					
1 gang unswitched + USB charger A-Type 2.4 A		1	6 176 57	6 177 57	6 178 57 ¹
1 gang double pole switched		10	6 176 43	6 177 43	6 178 43 ¹
2 gang double pole switched		5	6 176 48	6 177 48	6 178 48 ¹
1 gang single pole switched + neon		10	6 176 42	6 177 42	6 178 42 ¹
2 gang single pole switched + neon		5	6 176 47	6 177 47	6 178 47 ¹
2 gang single pole switched + USB charger A-Type + 3A		1	6 176 44	6 177 44	6 178 44 ¹
2 gang single pole switched with red cover + neon		5	6 176 49	6 177 49	6 178 49
BRITISH STANDARD SOCKET OUTLETS 15 A - 250 V~					
1 gang unswitched		10	6 176 50	6 177 50	6 178 50 ¹
1 gang single pole switched		10	6 176 51	6 177 51	6 178 51 ¹
1 gang single pole switched + neon		10	6 176 52	6 177 52	6 178 52 ¹
2 gang single pole switched		10	6 176 53	6 177 53	6 178 53 ¹
BRITISH STANDARD SOCKET OUTLETS 5 A - 250 V~					
1 gang single pole switched		10	6 176 54	6 177 54	6 178 54 ¹
EURO/US SOCKET OUTLETS - 10 A - 250 V~ / 15 A - 127 V~					
1 gang - 2 x 2P		10	6 176 62	6 177 62	6 178 62 ¹
1 gang - 2 x 2P switched		10	6 176 90	6 177 90	6 178 90 ¹
1 gang - 2 x 2P+E		10	6 176 64	6 177 64	6 178 64 ¹

1: Available on request

Belanko™ S white and colours

selection chart (continued)

		Pack	 White	 Anthracite	 Ivory
GERMAN STANDARD SOCKET OUTLET 16 A - 250 V~					
1 gang - 2P+E with shutters for child protection		10	6 176 56	6 177 56	6 178 56 ¹
MULTISTANDARD SWITCHED SOCKET OUTLET					
1 gang		10	6 176 67	6 177 67	6 178 67 ¹
2 gang		4	6 176 69	6 177 69	6 178 69 ¹
1 gang + USB charger A-Type 2.4 A		1	6 176 59	6 177 59	6 178 59 ¹
2 gang + USB charger A-Type + C-Type 3 A		1	6 176 55	6 177 55	6 178 55 ¹
FUSED CONNECTION UNITS					
Unswitched + cord outlet		10	6 176 80	6 177 80	6 178 80 ¹
Unswitched + neon + cord outlet		10	6 176 60	6 177 60	6 178 60 ¹
Switched + cord outlet		10	6 176 81	6 177 81	6 178 81 ¹
Switched + neon + cord outlet		10	6 176 82	6 177 82	6 178 82 ¹
CABLE OUTLETS					
20 A - 250 V~		10	6 176 85	6 177 85	6 178 85 ¹
45 A - 250 V~		10	6 176 86	6 177 86	6 178 86 ¹
BLANKING PLATES					
1 gang		10	6 176 28	6 177 28	6 178 28 ¹
2 gang		5	6 176 39	6 177 39	6 178 39 ¹
ARTEOR ADAPTOR					
1 gang		20	6 176 37	6 177 37	6 178 37

1: Available on request

Iraq

Tel: (+962) 795 066 167
(+962) 655 375 86

Jordan

Al Madina Al Monawara Street,
Tlaa' AL Ali, Building no. 263
Rana Center – 3rd floor
Offices 301 & 302
Amman – Jordan

Tel: (+962) 65537586
Fax: (+962) 65537589

Kuwait

Shuwaikh Safat 13002
P.O. Box 177
KUWAIT

Tel: (+965) 9726 2699
Fax: (+965) 2482 4754

Lebanon

Achrafieh 5585 Bldg., 6th floor
P. Gemayel Avenue – Aadlieh
Beirut

Tel: (+961) 1 422 166
Fax: (+961) 1 422 167

Oman

Tel: (+968) 91397978

Pakistan

Tel: (+962) 795 066 167
(+962) 655 375 86

Qatar

Global Business Center,
Al Hitmi Village Bldg #8,
4th Floor, Office #R2
Corniche Road - Doha, Qatar

Tel: (+974) 4 402 30 18
Fax: (+974) 4 436 66 73

Saudi Arabia

Riyadh (Central Region Office)
Al-Sulaiman Square Building, 2nd Floor
Office 16, Mousa Bin Nusair Street
P.O. Box 325099

Tel: (+966) 11 466 6640
Fax: (+966) 11 279 01 17

Al Khobar (Eastern Region Office)
Al-Khobar Mall
2nd Floor, Office 362
P.O. Box 927
Al Khobar 31952

Tel: (+966) 3 887 89 50
Fax: (+966) 3 887 89 52

Jeddah (Western Region Office-Head
Office

Al-Reem Business Center, 2nd Floor
Al-Rawdah District
P.O.Box: 51712
Jeddah 21553

Tel: (+966) 2 261 9696
Fax: (+966) 2 261 9797

United Arab Emirates

Legrand Middle East Headquarters
Wing C, Office 701
Dubai Silicon Oasis
P.O. Box 341068
Dubai, United Arab Emirates

Tel: (+971) 4 3821 821
Fax: (+971) 4 3821 822

GemNet Gulf L.L.C.

(A group company of Legrand)
Street No. 26, Al Quoz Industrial Area 4,
P.O. Box 52914,
Dubai, United Arab Emirates

Tel: (+971) 4 341 9920
Fax: (+971) 4 341 9940



EMB Electrical Industries S.A.E.

Headquarter office

Pyramids Heights Office Park
KM 22 Cairo - Alex. desert road
Building 1B, 12556
Tel.: +202 3536 0000
Fax: +202 3536 0001
www.legrand.eg